

SLC Malaysia



A Member Of

London Teacher Training College (UK)
IDP Education - IELTS Test Venue



VISION, MISSION AND CORE VALUES

Our Vision

An internationally leading skills and life long education hub enriching and empowering quality lives of the many people that it serves.

Our Mission

- To provide skills and life long education to the rest of the world.
- To provide skills and life long educations to the locals.
- To provide living skills for better generations.
- To build a better life for their families.

Core Values

Compassion, Open Door,
Integrity, Respect,
Perseverance, Diversity,
Celebration





Why SLC Malaysia!

Conducive Multi-cultured International study environment

- Existence since year 2000
- International friends from world-wide
- Fantastic location in the heart of Subang Jaya, an Education Hub of Malaysia
- Wide range of Skilled and Major languages course offered
- Individual attention and friendly student support
- Quality, carefully selected and dedicated teachers and staff
- Over 95% of our own student will recommend us
- Registered with the Ministries and members of Education Institutions
- IELTS Test Venue for IDP Education Ptv Ltd
- Validated by LTTC (UK)
- Conducive facilities and accommodation
- Our aim is to ensure that you improve your preferred studies or the skills that you wish to acquire. You will be provided with individual attention and achieve your learning objectives. 99% of our students says they made progress.
- SLC Malaysia is validated by the London Teachers Training College (UK) for it's English, German and French Language.
- Conduct the Diploma in TESOL via it's experienced corporate company Transfakta Sdn Bhd.

Student's Testimonials

What our students says...



Asussha, Japan

I have enjoyed my time in Malaysia studying Malay Language

SLC's Student House is the coolest place in the world because my housemates and new friends made me happy! In addition to that, the school supported me all the way



Abdullah, Algeria

SLC's student residence was perfect

Accommodation in the SLC's student residences was perfect, it was so cool to have friends to share nice moments. Eventually, it was a great experience. I have improved my English skills, and met nice students.

I got into University after doing my English Foundation right upto IELTS examination

I'm glad that my friends introduce me to SLC to learn English. I have completed all levels until the advanced IELTS (International English Language Testing System) at SLC prior to my enrolment into University in Malaysia. Alots of drilling and mock exams was given to me by the SLC Teachers that really helps me to score a high band for my Academic IELTS. I really thank SLC Teachers and Management for



Basma Yahya, Yemen



SLC is my favourite Institute of all time. I learned the right usage of grammar and other language skills such as Listening, Speaking, Writing and Reading while i studied there. My English has

Pasinee, Thailand



Programs Offered

English Language Skill Training (Elementary to Advance Level)

Intensive English Language (Elementary to Advanced Level)

IELTS Preparatory

Malay Language (Basic to Advance Level)

German Language (A1 to B2)

French Language (A1 to B2)

Mandarin Language (Basic to Advance Level)

English with Diploma in TESOL (UK)

Training that develop your future ...



ENGLISH LANGUAGE SKILLS TRAINING (ELEMENTARY TO ADVANCED LEVEL)

English Language Skills Training (Elementary to Advanced Level) Program at SLC is designed to promote communicative competence in English. Students who register for this program participate in 4 days classes, either in the morning, afternoon or evening. Students study 10 hours lesson or 20 hours lesson per week depending on their needs.

IELTS PREPARATORY – CAMBRIDGE UNIVERSITY

Having an IELTS (International English Language Testing System) certificate has been one of the necessities for students who are willing to study in a foreign university or people who want to migrate to other countries. Hence, SLC offers IELTS Preparatory lessons. Our centre IELTS preparation course guarantees students' band 6 out of 9 either in General or Academic IELTS Test.

Students who are studying in general English classes can also join IELTS preparation courses providing that they have passed Advanced level successfully.



GERMAN LANGUAGE (A1 TO B2)

Includes all the skills (Reading, Writing, Listening and Speaking) and Grammar Open to students at any level, beginner through advanced The common European Framework Reference for German Language (CEFR) Level A1 to B2 are taught.

FRENCH LANGUAGE (A1 TO B2)

At SLC we prepare students for examinations correspond to the levels of the common European Framework of Reference for Languages (CEFR) and range from A1 for beginners to B2 for language skills at the highest level. We provide TEXT books that compile to CEFR. After which you may be eligible to further your studies in France and Canada predominantly.

MANDARIN LANGUAGE (BASIC TO ADVANCED LEVEL)

Includes all the skills (Reading, Writing, Listening and Speaking) and Grammar. Open to students at any level, beginner through advanced.



ENGLISH WITH DIPLOMA IN TESOL (UK)

The Diploma in Teaching English To Speakers Of Other Languages (TESOL) is specifically designed for those who are interested in teaching English as a second or foreign language to others.





Support: SLC Malaysia will provide you with a comprehensive range of student services, including advice on further studies, social, sporting and cultural activities, and student health, welfare and accommodation

Experience: SLC Malaysia has been teaching English to international students since the year 2000.

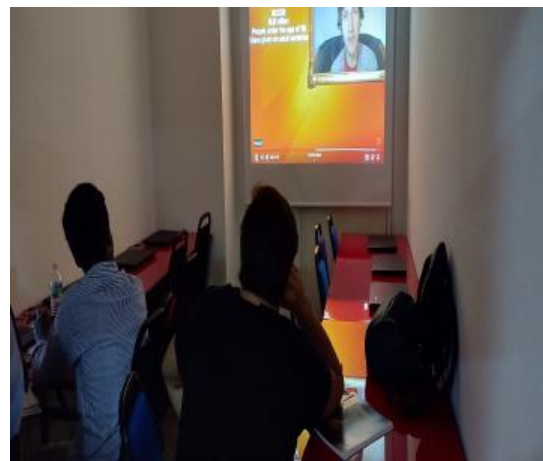


SLC Malaysia is endorsed by the IDP Education as a Test Venue for the Internationally recognised IELTS examination for both overseas and local students.

Small class sizes: The average class size is 15 - 20 students.

Great location: Situated in Subang Jaya an Educational Hub , just 10 kilometres from Kuala Lumpur's city centre. Subang Jaya is Malaysia's premier city for education with rich Culture, sports, shopping, food and entertainment.

Teaching excellence: SLC Malaysia teachers are fully qualified, experienced and dedicated to helping you achieve your goals. They use the latest, most effective teaching methods and materials.



Accommodation



Students will be housed in Suriamas Condo, a hostel which is approximately 15 minutes from SLC Language Centre. Suriamas Condo is equipped with many facilities to ensure the students' stay there is comfortable and convenient. Students staying in the hostel can avail themselves of the following facilities

IT Broadband Access
Laundry Services
Swimming Pool
24 hour security
Jacuzzi
Gymnasium
Tennis Court

Badminton Court
Table Tennis
Multipurpose hall
BBQ pit
Cafeteria
Groceries Store

Suriamas Condo is located strategically with easy access to and from major towns like Subang Jaya and Sunway and also the two major cities of Kuala Lumpur and Shah Alam.

Nearest Shopping Malls

- SUNWAY PYRAMID (2 km)
- EMPIRE MALL (2.9 km)
- SUBANG PARADE (2.9 km)

Nearest Medicals

- SUBANG JAYA MEDICAL CENTRE (1.0 km)
- SUNWAY MEDICAL CENTRE (1.8 km)

Rental (All rooms are subject to availability and need advanced booking)

Whole unit rental from 2800/- RM onwards

Master room rental (big room attached bathroom) from 900/- RM onwards

Middle room rental (middle room with attached bathroom or sharing bathroom) from 750/- RM onwards

Small room rental (small room with attached or sharing bathroom) from 650/-RM onwards



Student Visa

SLC will support student visa for international students. Our service consists of documentation and dealing with EMGS (Education Malaysia Global Services) and Malaysian Immigration Authorities.

When we receive the student visa approval from the Malaysian Immigration Department (2 to 3 weeks weeks after submission of the application), we will send the Visa Approval Letter (VAL) to you to get a single Entry Visa from the nearest Malaysian Embassy

Airport Pick-up Arrangement

After your single entry visa is issued, please inform us of your travel arrangements at least 5 days before departure. It is important to note that under Malaysian Immigration requirements, a representative from SLC is required to meet you at the Kuala Lumpur International Airport (KLIA) or (KLIA2). You should also plan your travel so that you will arrive 5 days before the session begins.

Assistance for Weak Students

We have special classes for students who are either weak or slow in their progress. Special support classes will be held for those who needs and qualify for the service.

Accommodation Placement

SLC can offer accommodation options to students according to their preference and budget. Students can also stay at SLC hostel.

Assistance in opening a bank account

Students can open an account in Malaysian banks with a confirmation letter from SLC (subject to individual bank requirement).

Student services in detail:

We understand that learning English and other Languages in a new country can be challenging, so we offer you support before you leave your country and throughout your stay.

Before you leave home

- Pre-departure help and information.
- Airport reception at Melbourne Airport.

Accommodation

- Expert and careful placement
- Temporary accommodation on arrival (if required).
- Advice about finding independent accommodation.

When you arrive

- Full campus orientation and briefing.
- Introduction to all student services.

Student support

- Free, confidential, on-campus counselling and support services.
- Targeted mindfulness, stress reduction and healthy lifestyle seminars.
- On campus assistance with health insurance claims.
- Information to assist with internship
- First aid and assistance with health referrals.

Help and advice hotline

This after-hours service is free for SLC Malaysia students and is available 24 hours a day, seven days a week, for students who need help at night or on the weekend.

Further studies advice

- Advice about course planning, university placement and enrolment procedures.
- Access to the latest publications from further study institutions across Malaysia.

Sporting, Cultural, Outdoor Programs and Excursions

- Curriculum-related excursions — taking your language learning out of the classroom.
- Visits to areas of interest in Subang Jaya and its surrounds.
- Optional weekend day trips and course break excursions.
- Up-to-date information on events in Malaysia.



Facilities at SLC Malaysia

Have access to the following facilities:

- Library
- Read the daily newspapers, journals and other publications.
- Conduct research for assignment work or personal development.
- Use electronic, print and audio materials that are graded to your level of English.
- Use computers for class work & projects.

Sporting & Student Recreation

- Access to badminton & basketball
- Access to a gymnasium
- Access to Pool

Cafeteria

- Enjoy a wide range of Malaysian dishes as well as cake, coffee, cold drinks, snacks and fast food

Additional facilities

- Television
- Examination & IELTS Test Hall
- Audio & Visual with PA System
- Language Lab
- Access free WiFi
- Prayer room and Pantry

Testing centre

- SLC Malaysia is an official IELTS testing venue for IDP Education.
- Independent Learning (IL), SLC Malaysia students have 2 hours of class time and two hour of independent computer lab time each day.



- Independent learning time is an opportunity to practise specific language skills that you learn in class.
- There is also a great variety of activities to choose from during your Independent Learning (IL) hours.

Online Learning

- There are many websites that can help you improve your English. SLC Malaysia's IL Coordinator is a fully qualified teacher who can help you find the right resources to improve your English.

Extra Curricular & Classes

Join an extra class Participate in conversation, pronunciation, reading and handwriting sessions. Study guidance Choose from a variety of materials, which directly support the class curriculum:

- grammar aids.
- vocabulary and spelling enhancers.
- pronunciation clarification.
- reading and writing guides.
- listening practice.





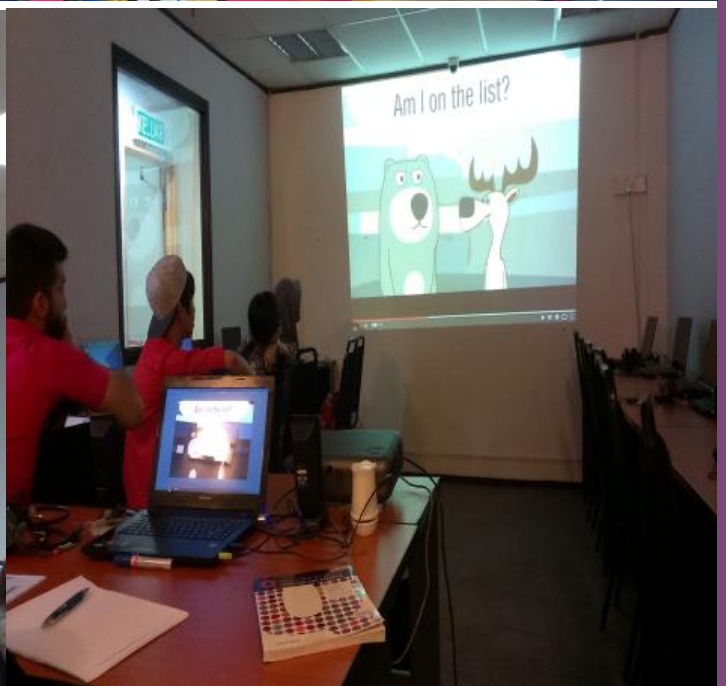
INTERNATIONAL STUDENTS

Application Procedure

1. To register at SLC Language Centre and apply for student visa, please complete online application form or registration form and email the following documents to info@slc.edu.my
2. Clear Digital Passport sized photograph with White Background.
3. All pages of International Passport (Passport must have at least 2 Years validity)
4. Copy of your high school / Pre-university / university certificate and transcripts (one set in original language and second set in English translation if applicable).
5. Pre-arrival medical screening form and report, the form can be download from here (Medical examination form verified by doctor).
6. International student registration and visa processing fee (EMGS FEE) (RM2,000 non-refundable or transferable)
7. All payment must be paid in full before commencement of class.
8. Upon receiving your application, documents and fees, SLC will send you the Letter of Offer and SLC will submit student's visa application to Education Malaysia Global Services (EMGS) to process visa approval letter (VAL).
9. When SLC receive the Malaysian Immigration approval (approx. 1 month), SLC will send a notification to inform student on visa approval. Student is required to apply for an entry visa from the Malaysian Embassy in their respective country (if necessary).
10. Student MUST inform SLC of their arrival details and accommodation requirement (AT LEAST ONE WEEK before arrival date). SLC staff will assist student to get immigration clearance at airport. Failure to inform SLC less than 5 working days, a penalty of RM100 will be imposed.
11. To report at International Office, SLC within 3 days upon arrival.
12. Once the student arrives in Malaysia, within 7 working days students have to attend medical screening at EMGS approved panel clinics.
13. To submit passport to SLC International Office for endorsement of student pass.

Payment by cash or telegraphic transfer payable to:

Payee : TRANSFAKTA SDN.BHD.
Account No. : 36700000483
Bank Name : HONG LEONG BANK
Address : W-1-0, W-2-0 & W-1-1, Subang Square
Jalan SS15/4G, 47500 Subang Jaya,
Selangor, MALAYSIA
SWIFT CODE : HLBBMYKL



SLC

EST. 2000

PUSAT BAHASA ISTIMEWA

(Wholly Owned by Transfakta Sdn Bhd)

W-10-5 West Wing, Subang Square, Business Centre
Jalan SS 15/4G, 47500 Subang Jaya
Selangor, MALAYSIA

www.slc.edu.my | www.facebook.com/SLC.Malaysia

Tel: +603 8601 3997 | +603 8601 3998

Email: info@slc.edu.my